

# BE AWARE!

## *Agrilus bilineatus*

A threat to oak and chestnut trees

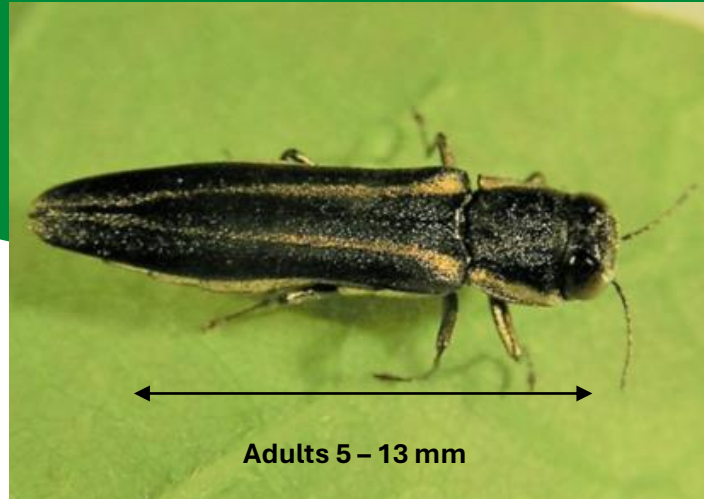


Image: E. Jendek. EPPO Global Database, <https://gd.eppo.int>

**What is it?** The two-lined chestnut borer (*Agrilus bilineatus* - Coleoptera: Buprestidae) originates from eastern North America where it is generally a secondary pest infesting and killing oak and chestnut trees weakened by various stress events. This pest, which has been introduced into Turkiye could become a devastating pest in Europe given the importance of oak and chestnut trees in forests.

**How to recognise it?** Signs of infestation include characteristic “D” shaped exit holes, as well as dieback and death of trees. The yellow stripes along the body and head of the adults are only found on this species. adults are between 5 – 13 mm long.



Image: Bugwood.org.



Images: S. A. Katovich. (USDA)EPPO Global Database.



If you spot the signs and symptoms of this pest, report it to the plant health authorities via Tree Alert: <https://treealert.forestresearch.gov.uk/>

More information on *A. bilineatus* can be found on the Forest Research website:

<https://www.forestresearch.gov.uk/tools-and-resources/fthr/pest-and-disease-resources/two-lined-chestnut-borer-agrilus-bilineatus/>

For Northern Ireland, contact the DAERA Plant Health Inspection Branch:

Tel: 0300 200 7847 Email: [planthealth@daera-ni.gov.uk](mailto:planthealth@daera-ni.gov.uk)



This poster has been prepared in collaboration with EPPO ([www.eppo.int](http://www.eppo.int))



Department  
for Environment  
Food & Rural Affairs