

Potato flea beetles

(*Epitrix cucumeris*, *E. papa*, *E. subcrinita* and *E. tuberis*)

Very damaging beetle pests of **potato**. They are **not currently present** in the UK.

They are most likely to be noticed because of the **damage they cause**.

Larvae feed below ground on **roots** and **tubers**. On tubers, this creates shallow, wavy tunnels just under the skin, and deeper holes in the tuber. Damage is only visible when the tuber is harvested.

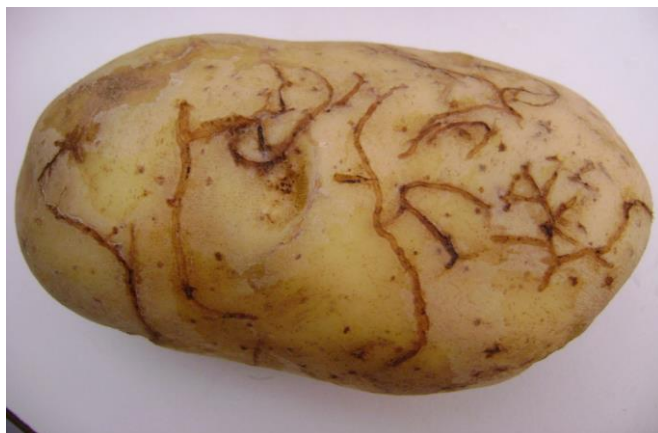
Adults feed on potato leaves and chew **tiny circular holes**, between **1 and 1.5mm** wide. This creates a clear 'shot-hole' pattern across the leaf surface.

They lower the quality, value and marketability of potato crops.

The **adult potato flea beetle** is:

- between 1.5 and 2mm long
- dark coloured
- oval and covered in fine hairs

If you suspect it, report it by visiting <https://planthealthportal.defra.gov.uk/> or use the QR code.



Feeding damage from larvae on a potato tuber
© Crown Copyright



Feeding damage on leaves © Crown Copyright



Adult potato flea beetle © Crown Copyright



Department
for Environment,
Food & Rural Affairs



Llywodraeth Cymru
Welsh Government



Department of
Agriculture, Environment
and Rural Affairs
www.dera-ni.gov.uk



Scottish Government
Riaghaltas na h-Alba