

Melon thrips (Thrips palmi)

A pest of a wide range of **vegetables** and **ornamental** plants such as **aubergine**, **chrysanthemum**, **cucumber**, **peppers** and **tomatoes**.

Its main pathway to enter the UK is on **cut flowers and fruit and vegetables from South and Southeast Asia**. It is unlikely to establish outdoors in the UK.

It causes damage by feeding and can be a vector for several plant viruses. This leads to **reduced vigour, yield and marketability**.

Outbreaks in protected crops can rapidly build into heavy infestations and plant death. At **25°C**, the **lifecycle takes around 18 days**.

It is **very small, measuring about 1mm**. The feeding damage is more likely to be seen than the adults.

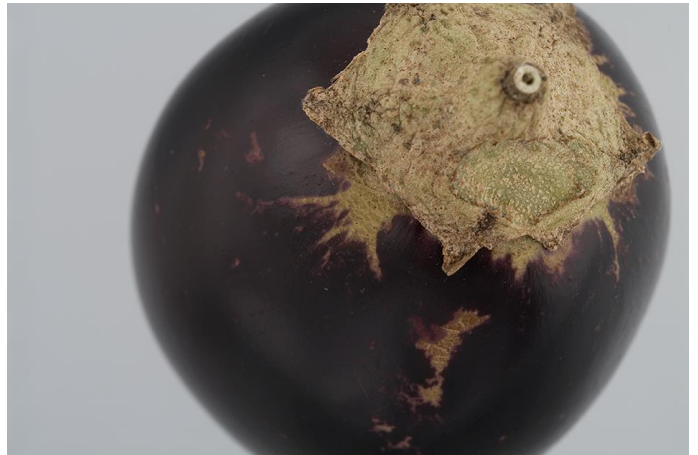
An adult melon thrips is **almost entirely yellow**. When the wings are folded, they form a **dark line** along the body.

Look out for silvery surface scars, leaf deformation and yellowing.

If you suspect it, report it by visiting <https://planthealthportal.defra.gov.uk/> or use the QR code.



Adult female melon thrips © Crown Copyright



Surface scarring on an aubergine caused by melon thrips © Crown Copyright



Thrips feeding under a leaf © Crown Copyright



Department
for Environment,
Food & Rural Affairs



Llywodraeth Cymru
Welsh Government



Department of
Agriculture, Environment
and Rural Affairs
www.dera-ni.gov.uk



Scottish Government
Riaghaltas na h-Alba