



Department  
for Environment  
Food & Rural Affairs



Llywodraeth Cymru  
Welsh Government



The Scottish  
Government  
Riaghaltas na h-Alba

## Pest Alert:

# Colorado potato beetle

- The Colorado potato beetle (*Leptinotarsa decemlineata*) is a serious pest of potato, present in the EU, but absent from the UK.
- In May 2015 there was a UK finding linked to imported French potatoes. As well as entering the UK on potatoes, beetles are also occasionally imported as hitchhikers on non-host plant material, such as leafy vegetables, salad leaves, fresh herbs and grain.
- Adult Colorado beetles (Fig 1.) and beetle larvae (Fig 2.) are distinctive (photos courtesy of Fera Science Limited).

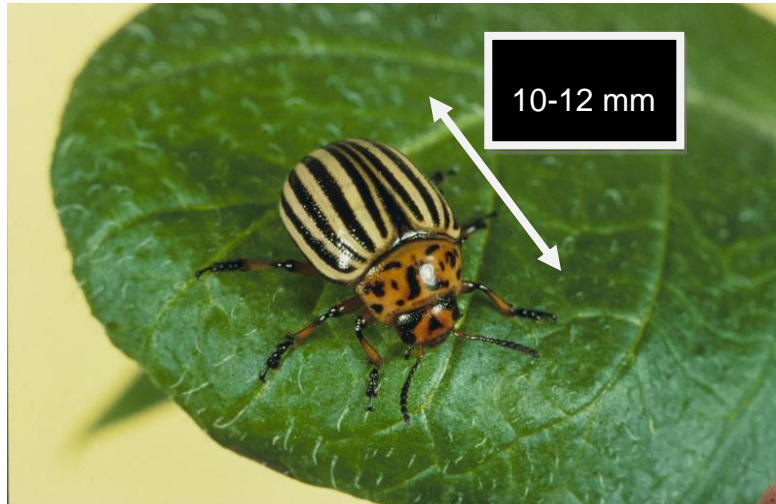


Fig1.



Fig 2.

If you see any suspicious beetles, please inform the relevant authority

For England and Wales, contact your local APHA Plant Health and Seeds Inspector, or the PHSI headquarters, in York:

Tel: 01904 405138

Email: [planthealth.info@apha.gsi.gov.uk](mailto:planthealth.info@apha.gsi.gov.uk)

Web: <https://www.gov.uk/plant-health-controls>

For Scotland, contact your local RPID officer:

<http://www.gov.scot/Topics/farmingrural/Agriculture/AOcontacts/contacts>

Email: [hort.marketing@gov.scot](mailto:hort.marketing@gov.scot)

Web: [www.gov.scot/PotatoHealthControls](http://www.gov.scot/PotatoHealthControls)

For Northern Ireland, contact the DARD Plant Health Inspection Branch:

Tel: 0300 200 7847

Email: [planthealth@dardni.gov.uk](mailto:planthealth@dardni.gov.uk)

Web: [www.dardni.gov.uk](http://www.dardni.gov.uk)